

PROJECT:

DEVELOPERS:

CONSULTANTS:

SECOND FLOOR DOOR SCHEDULE:

- (01) (04) 3'-0"x7'-0" HOLLOW METAL DOOR AND FRAME, 1HR. F.P.S.C.
- (02) (05) 3'-0" x 8'-8" x 3/4" THICK TEMPERED FRAMELESS GLASS WITH PIVOT HINGES.
- (03) (06) (07) 3'-0"x7'-0" FLUSH SOLID CORE PAINTED WOOD DOOR, SCHLAGE PRIVACY LOCK AL40S-E76 WITH SATURN LEVER HANDLE, 626 FINISH, SATIN CHROMIUM PLATED, 1/2" PAIR BUTT HINGES, SILENCERS.

REVISIONS:	No.	Description	Date
	1	PAA AS BUILT CONDITIONS	09.27.07
	2	PAA	02.08.17

THESE ARCHITECTURAL DOCUMENTS CONSTITUTE THE ENTIRE AGREEMENT BETWEEN THE ARCHITECT AND THE CLIENT. ANY CHANGES OR DUPLICATION IN ANY FORM OR MEAN WITHOUT WRITTEN AUTHORIZATION OF THE ARCHITECT.

ARCHITECTURAL SOLUTIONS

3815 PUTNAM AVENUE WEST SUITE M2
BRONX, NY, 10463
TEL: 718-884-4030
FAX: 718-884-4050

PROJECT LOCATION:

CASTLE CASHING SERVICES
4186 BROADWAY
NEW YORK, NY, 10033

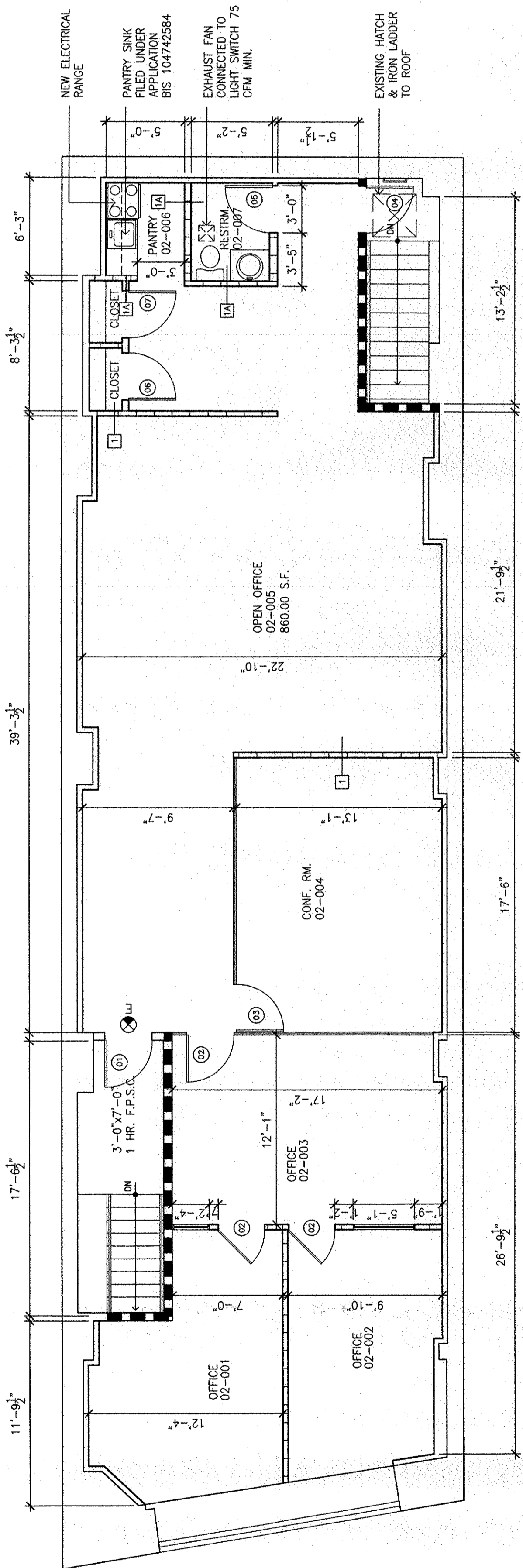
DRAWING TITLE:

FLOOR PLANS

SCALE:

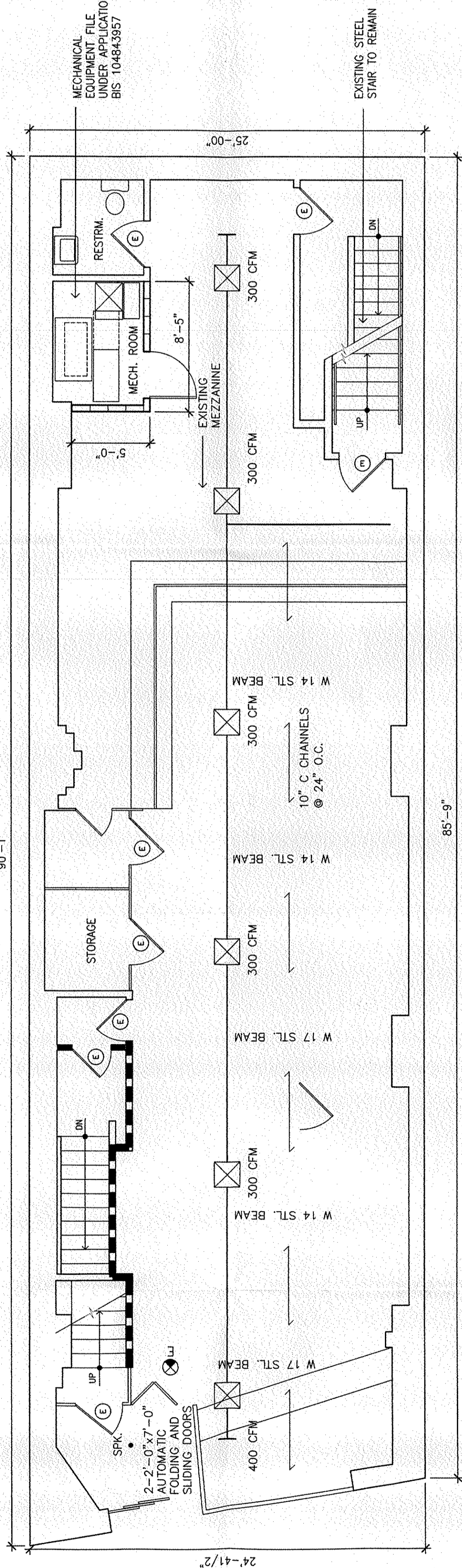
JOB NO.:	10706	DRAWN BY:	ROSSY ROBLES
SCALE:		DATE:	01/19/2017
AS NOTED		DRAWING NO.:	

A-2



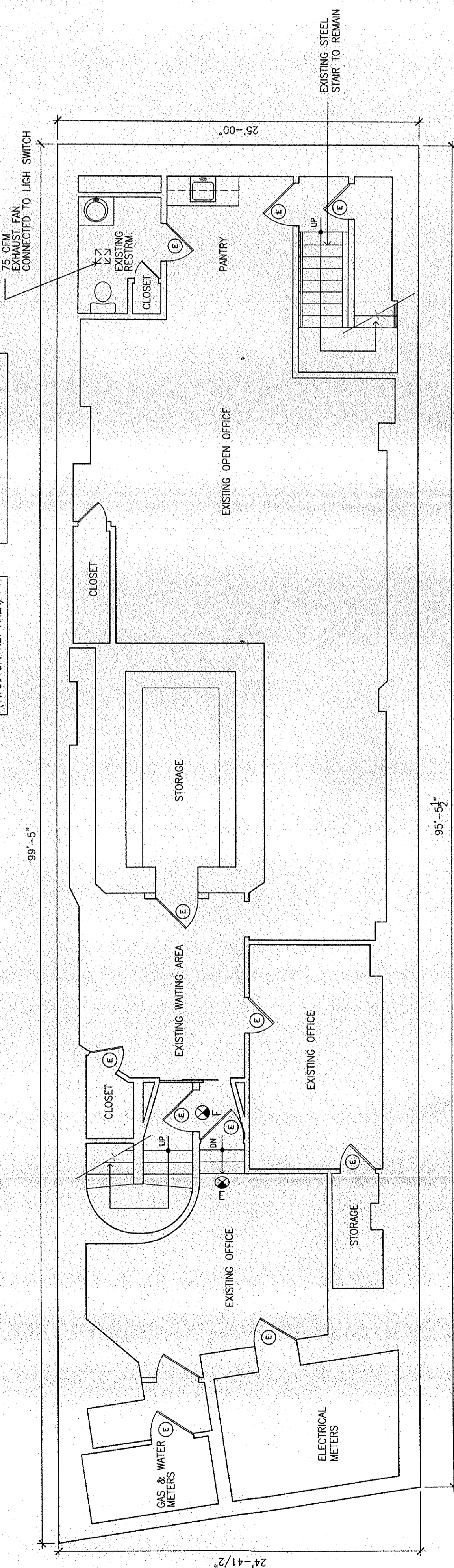
3 SECOND FLOOR PLAN
SCALE: 3/16" = 1'-0"

OFFICES
U.G. 68
40 PERSONS



2 FIRST FLOOR PLAN
SCALE: 3/16" = 1'-0"

STORE
U.G. 6A
70 PERSONS
2,214.14 SF.
(1,750 SF. NET AREA)



1 CELLAR FLOOR PLAN
SCALE: 3/16" = 1'-0"

OFFICE
U.G. 6A
10 PERSONS
2,143.75 SF.

NOTE: SPRINKLER SYSTEM CELLAR FLOOR FILED UNDER APPLICATION BIS 103852136

NOTE: SPRINKLER SYSTEM FOR FIRST AND SECOND FLOOR FILED UNDER APPLICATION BIS 104742584